

Attachment 15
Outdoor Stabilization Facility - Design and Operation

Figure D-2 - Stabilization Facility Process Flow Diagram

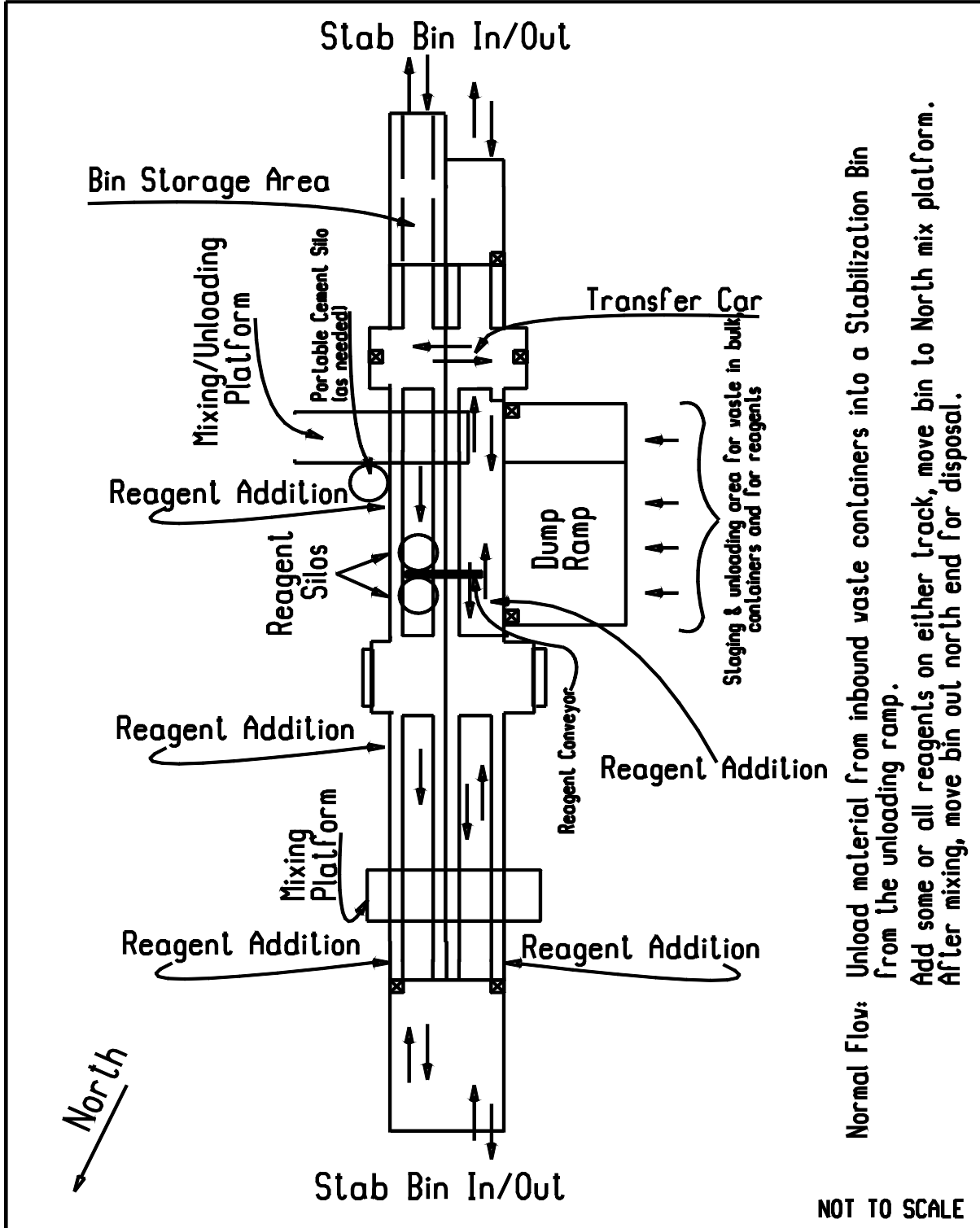
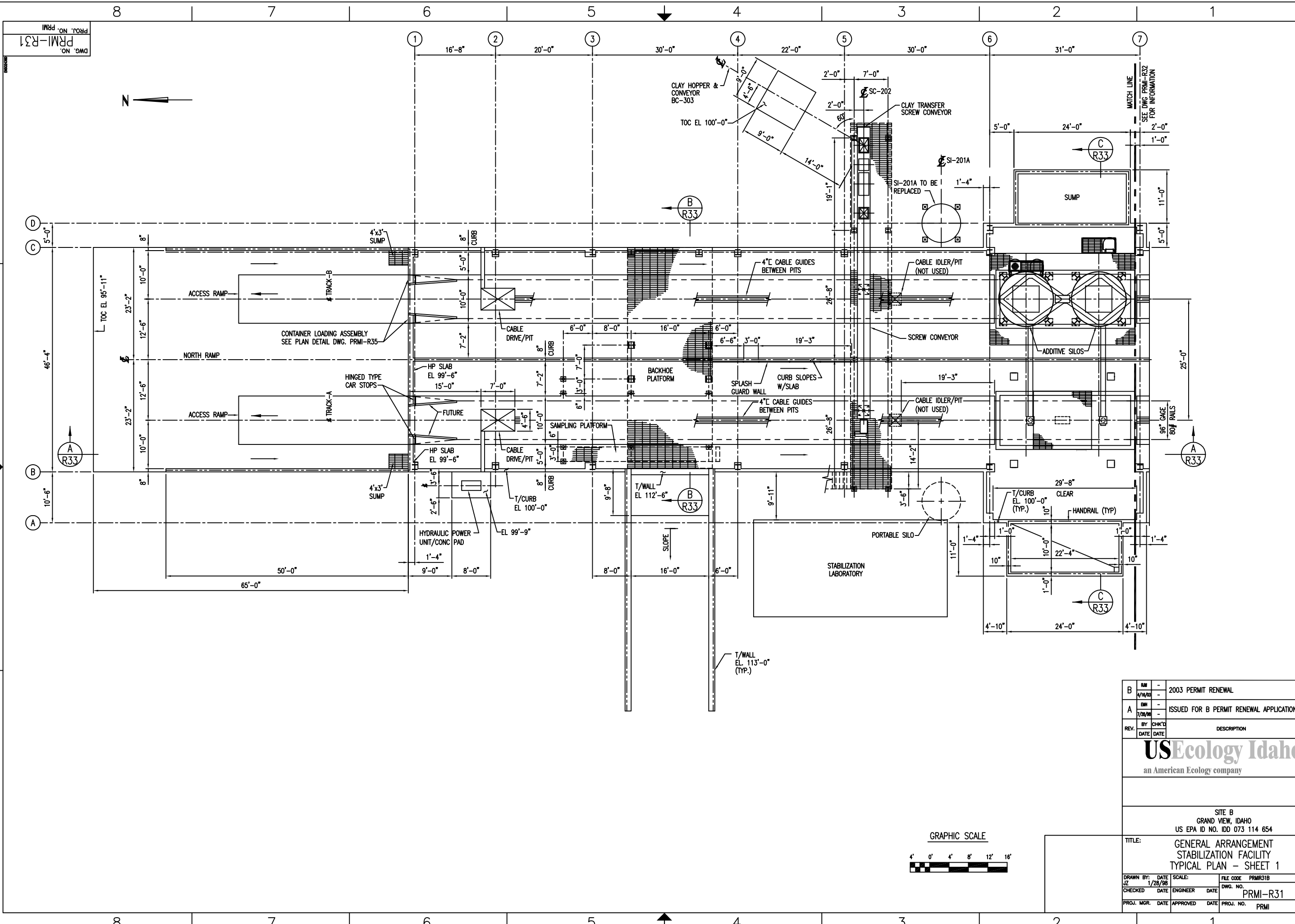
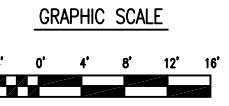


Figure D-2a

<u>Area</u>	<u>Description of Storage Uses (Stabilization Facility)</u>
1. South Truck Dumping Platform	This area may be used for storage of DOT-approved containerized waste ranging from small containers to a single 52-yd ³ mix bin.
2. North Truck Dumping Platform	This area may be used for storage of DOT-approved containerized waste ranging from small containers to four 52-yd ³ mix bins.
3. Southwest Unloading Ramp	This area may be used to store up to a single 52-yd ³ mix bin. No small containers are allowed (drums, bags, etc.).
4. Southeast Unloading/Storage Ramp	This area may be used to store up to three 52-yd ³ mix bins. No small containers allowed (drums, bags, etc.).
5. Southeast Track Area	This area may be used to store up to three 52-yd ³ mix bins. No small containers are allowed (drums, bags, etc.).
6. Southwest Track Area	This area may be used to store up to three 52-yd ³ mix bins. No small containers allowed (drums, bags, etc.).
7. Northeast track Area	This area may be used to store up to seven 52-yd ³ mix bins. No small containers allowed (drums, bags, etc.).
8. Northwest Track Area	This area may be used to store up to seven 52-yd ³ mix bins. No small containers allowed (drums, bags, etc.).
9. North Unloading Ramp	This area may be used to store up to two 52-yd ³ mix bins. No small containers allowed (drums, bags, etc.).



PRM-R31
 DWG. NO.
 PROJ. NO. PRM



B	4/10/03	2003 PERMIT RENEWAL		
A	7/20/00	ISSUED FOR B PERMIT RENEWAL APPLICATION		
REV.	BY	CHK'D	DESCRIPTION	PROJ. ENGR
	DATE	DATE		ENGR

USEcology Idaho
 an American Ecology company

SITE B
 GRAND VIEW, IDAHO
 US EPA ID NO. IDD 073 114 654

TITLE:
 GENERAL ARRANGEMENT
 STABILIZATION FACILITY
 TYPICAL PLAN - SHEET 1

DRAWN BY:	DATE:	SCALE:	FILE CODE:	PRM-R31B	REV. NO.:
JZ	1/28/98		DWG. NO.:	PRM-R31	B
CHECKED:	DATE:	ENGINEER:	DATE:	PROJ. NO.:	PRM